

PART OF THE N.W. 1/4 OF SECTION 29, T.7N., R.1W., S.L.B. & M.

# TAYLOR ESTATES PLAT I

IN NORTH OGDEN CITY

TAXING UNIT: 10

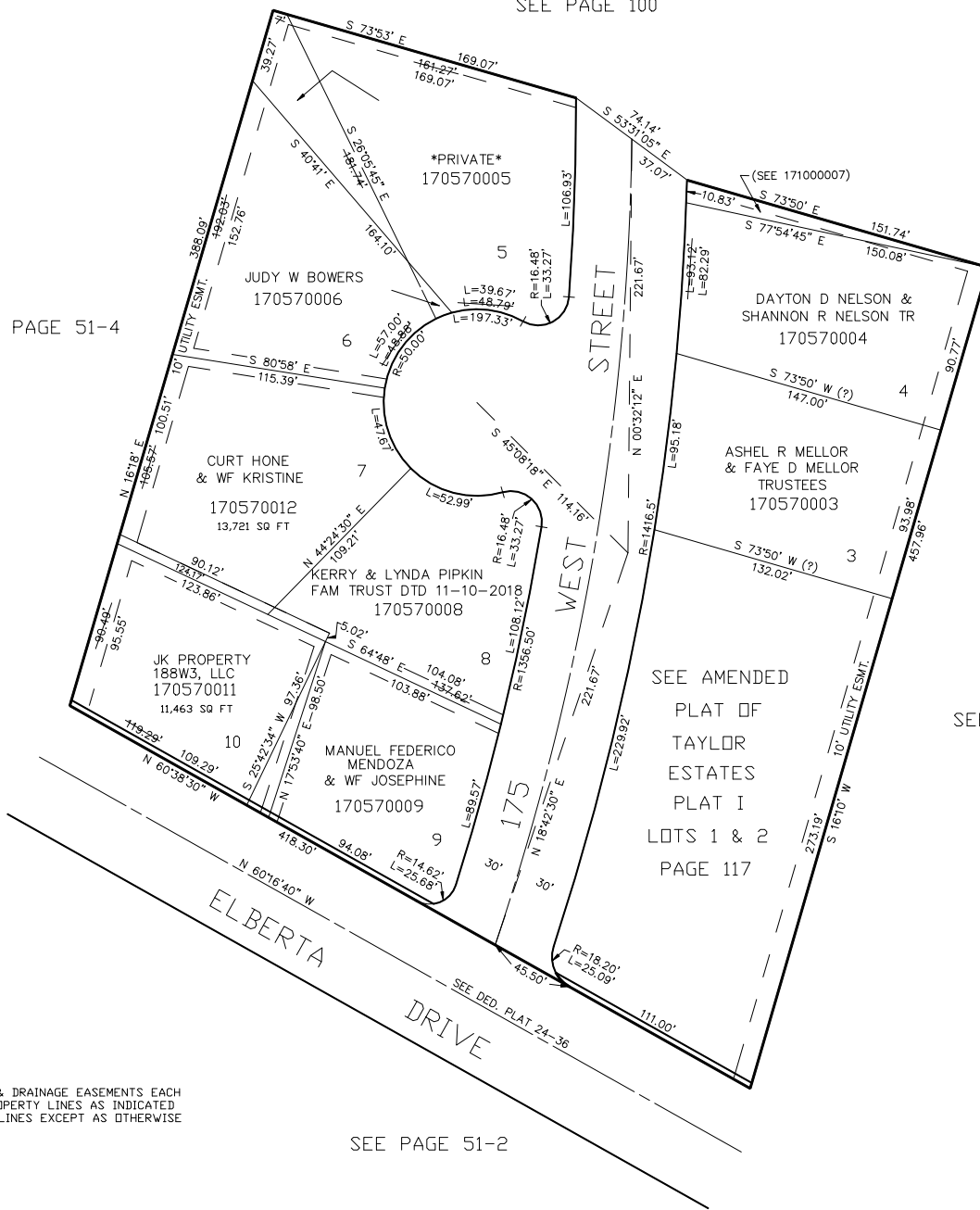
SCALE 1" = 50'

SEE PAGE 100

SEE PAGE 51-4

SEE PAGE 51-1

SEE PAGE 51-2



5' UTILITY & DRAINAGE EASEMENTS EACH SIDE OF PROPERTY LINES AS INDICATED BY DASHED LINES EXCEPT AS OTHERWISE SHOWN.

FOR COMPLETE ENG DATA SEE ORIGINAL DEDICATION PLAT IN BOOK 15, PAGE 19 OF RECORDS.

NOTE: BEARING BASE WASHINGTON BLVD. MON. LINE TAKEN AS N 0°50'15" E